



M2 VET

Multi-parameter patient monitor



Veterinary Patient Monitors

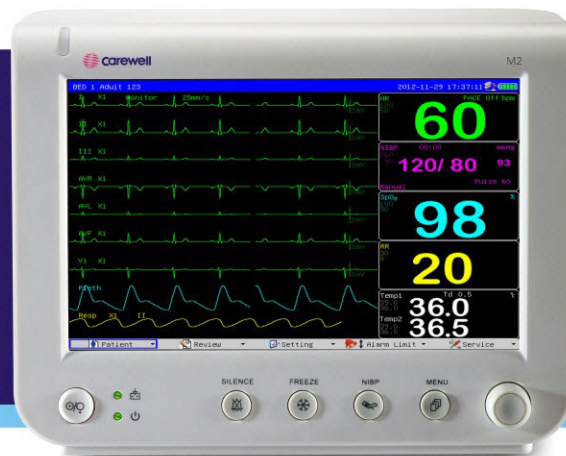
Main features

- Patent design: slim and compact, easy to carry around
- Display: 7" TFT color screen with high brightness 16:9 wide display
- Multi-language available: English, Chinese, Spanish, Portuguese, Russian, French, German, Italian, Turkish, Czech, Danish, Dutch, Finland and Polish
- 6 display interfaces: Standard, Large font, NIBP trend, Trend table, Full-lead ECG and OxyCRG with maximum 9 waveforms display
- Storage and review function:
 - 720 hours graphic and tabular trends of all parameters
 - 1000 groups of NIBP data storage and review
 - Support 200 groups of alarm events review
- 12 hours of waveforms review
- Analysis: Arrhythmia analysis, ST segment analysis, pacemaker analysis and titration of drug concentrations
- Alarms: Auto character, visual and audible alarms with human voice hint for physiological alarms
- SpO2 pulse-tone modulation (Pitch tone)
- Double over-pressure protection function: Decompress automatically to protect the patient from over-pressure
- 6 hours continuous operating time with internal lithium battery
- Powerful network function: support wired or wireless network, online software upgrade and nurse call system (option)
- Applicable professional monitoring for swine, dogs, equine, cats and etc.



M2 VET

Multi-parameter Patient Monitor



Specifications:

Packing information

Size: 192×150×91 mm
Net weight: 1.2Kg
Gross weight: 2.2Kg
Carton size: 250×180×190mm

Power Supply

AC: 100-240V, 50/60Hz
D.C. 16.8V, 1A

Battery

2200 mAh 14.8V rechargeable lithium battery
Operating time: more than 6 hours
Maximum charging time: less than 6 hours.

ECG

Lead mode: 3/5 Leads
Lead method: I, II, III, AVR, AVL, AVF, V, I, II, III
Gain: ×2.5mm/mV, 5.0mm/mV, 10mm/mV, 20mm/mV
Sweep speed: 12.5mm/s, 25mm/s, 50mm/s

Heart rate

Measure range: 15 ~ 350 bpm
Accuracy: ± 1%
Resolution: 1 bpm

Respiration

Method: Impedance between RA-LL
Gain: ×0.25, ×0.50, ×1, ×2, ×4
Respiration Rate
Measurement Range: 0 ~ 120 BrPM
Resolution: 1 BrPM
Accuracy: 0~6 BrPM: (unspecified)
7~150 BrPM: ±2 BrPM

NIBP

Measurement method: Oscillometry
Measure mode: Manual, Auto, STAT
Measure interval in AUTO Mode:
1,2,3,4,5,10,15,30,60,90,
120,180,240,480 min

Pulse rate range: 40 ~ 240 bpm

Measure and alarm Range

SYS 40 ~ 280 mmHg

DIA 10 ~ 220 mmHg

MEAN 20 ~ 240 mmHg

Resolution: 1mmHg

Accuracy: Maximum mean error: ±5mmHg

Maximum standard deviation: 8mmHg

Overpressure Protection: 300 mmHg

SpO₂

Measurement range: 0 ~ 100 %

Resolution: 1 %

Accuracy:

70% ~ 100%: ±2 %

<69%: unspecified

Pulse Rate

Measure and alarm Range: 20~250bpm

Resolution: 1bpm

Accuracy: ±3bpm

Temperature

Channel: 1

Measure and alarm Range: 0 ~ 50 °C

Resolution: 0.1°C

Accuracy (no sensor): ± 0.1°C(0°C ~ 50°C)

EtCO₂(Option)

Measurement range: 0% ~ 13%

Resolution: 1 mmHg

Accuracy: 2 mmHg @ < 5.0% CO₂(at ATPS)

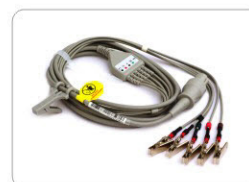
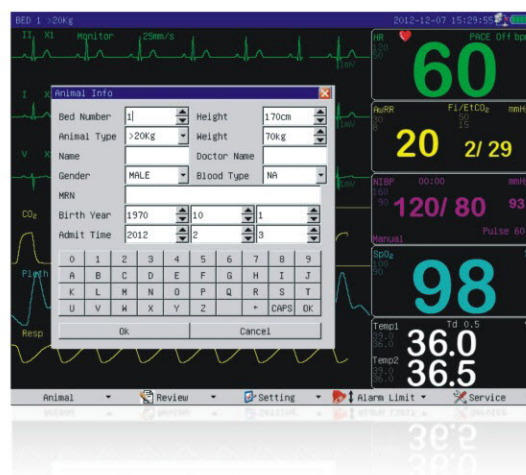
Respiration rate: 3 ~ 150 bpm

Standard Configuration:

3/5 lead ECG, HR, RESP, TEMP, SpO₂, PR, NIBP

Optional Configuration:

Mainstream/side stream EtCO₂, touch screen,
USB port, Carry bag, Wall mount, Hanging bracket,
Wired or wireless central station, Nurse call function



Curved sideview



Hanging bracket



Light weight



Carry bag(Optional)



Palm top type

Shenzhen Carewell Electronics Co., Ltd.

※ Specification subject to change without prior notice

Add: 1A-2/F, Building 29, District B, Tanglang Industrial Zone, Taoyuan Street Nanshan, Shenzhen 518055, P.R. China

Tel: +86-755-8617 0389 Fax: +86-755-8617 0478

E-mail: market@carewell.com.cn Website: www.carewell.com.cn